

What exactly is a Livinghotel?

Our Livinghotels are not only designed to stay at them, but to feel at home. Therefore, they do not offer typical hotel rooms, but apartments with kitchenette

This means: there are all the comforts of a hotel – but with an added value. This is called “Serviced Apartments” nowadays and is attractive for everyone who wants a little bit more, ranging from business travellers and day visitors to tourists.

Derag Livinghotels have already been operating in this industry for more than 35 years and with about 3,200 rooms they are one of the market leaders in the German-speaking countries. Based on this experience, SOULMADE is a newly created brand by which we have realized our ideas of how “Hotel” 2016 could look like – and this first of all in Munich - Garching.



SOULMADE

by Derag Livinghotels



Not a typical hotel room: our apartments with kitchenette.

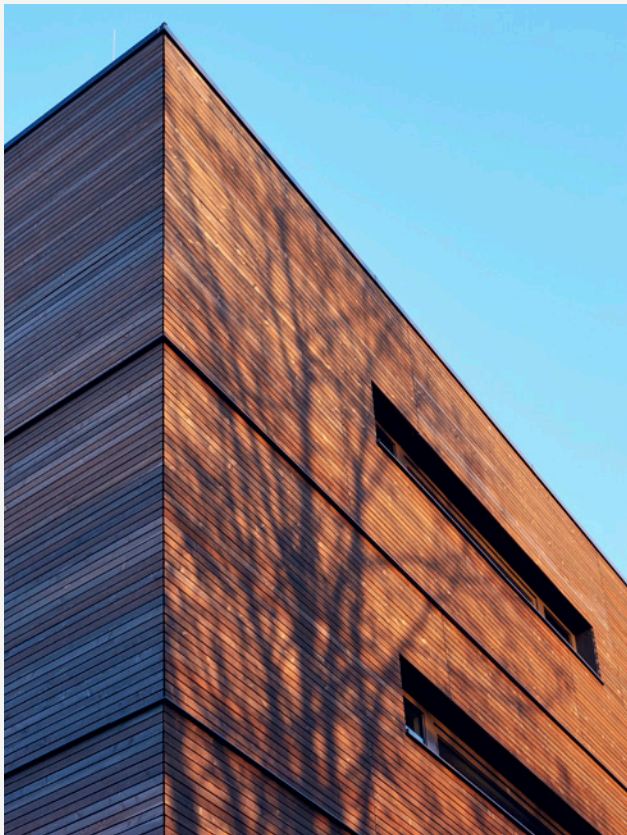




SOULMADE

by Derag Livinghotels

Wood is alive, warming
and good-smelling.
People simply feel
comfortable inside.



A characteristic feature of SOULMADE is the wooden construction: modern and still cosy, fully equipped and still sustainable, high-end and yet not high-flown.

Why a complete hotel made of wood? By means of wood, we create a more comfortable indoor climate and improve the room acoustics. By using wood, each room is turned into a natural unique specimen. In addition, wood is an energy-saving and environmentally friendly building material.

Both within and outside: wood sets the tone at SOULMADE and thus ensures natural cosiness.





We go for example for quality of sleep and metal-free beds completely made of ash wood. Natural materials, discreet colours, a lot of cosiness. What we are aiming at is that people feel good without being exactly able to say why. A lot of things our guests will find at SOULMADE are simply there - unobtrusive, kind and beautiful. Just like the Barefoot Path in the Pocket Park, including Kneipp hose and towel station. In short: we have built a hotel where we would like to live ourselves.

All SOULMADE apartments have a completely equipped kitchenette with induction cooker, microwave, electric kettle, tableware and a proper refrigerator including a freezing compartment. Furthermore, the guest will find metal-free ashen beds, a work and living area with latest technology, high-speed WLAN free of charge, flatscreens as well as a separate tablet in each room. Phone calls are free of costs – to almost any place.



SOULMADE



SOULMADE

by Derag Livinghotels



3

139 rooms

Business Suites with
approx. 21 m²

Junior Suites with
approx. 40 m²



The Living Room —
300 sqm for relaxing,
meeting people
or working.



SOULMADE

by Derag Livinghotels

SOULMADE does not provide for the typical reception counter, the breakfast room or the separate bar. Instead, we call the whole ensemble Living Room. This means: no artificial distance, no guidelines, no stress. Instead, plenty of room (almost 300 m²!), both for breakfast as well as for meetings (including flatscreens for the presentation in-between which are available free of charge) or the nightcap in the evening.

It is up to the individual guests, what of all these activities they want to perform on the terrace, in the large sofa corners, in front of the open fireplace or at the co-working table groups. For this reason, there will certainly be a relaxed atmosphere and guests are tempted to stay just a little bit longer. This also applies to our Inside-Out-Bar where the barkeeper does not work behind the bar but next to the guest and sometimes also has time to chat about important things (or unimportant ones, as well).





Conference area

And if you want to discuss the quarterly figures strictly confidentially, SOULMADE offers you three separate rooms. These are not equipped with bulky office furniture and beamers, however, but with comfortable chairs or large poufs and mats, with a whole wall serving as blackboard and sometimes even with an A3 notepads on rolls in order to give free rein to creativity. Large 65" flatscreens, any connections and other modern technology needed are also in place, of course.



Emma

You have forgotten your toothpaste or want to cook pasta at your Apartment? All of this is available at our in-house EMMA Store (also opened, of course, for our Garching neighbours).

With EMMA, we above all want to offer regional products and products from the surrounding area and support local suppliers.



Gym

Devices? Are not available at our place. That is, not in the usual way. The new training trend "Functional Training" goes for free exercises for stabilizing the body and keeping it healthy. The difference to conventional training methods is that focus is not put on brute muscle power, but to increase the physical performance sustainably and to reduce the risk of injury. And the muscles are free of charge at that. With Pavigym™ and TRX we have found the right partners in this respect. Even without much prior knowledge, you can quickly undergo your training, having fun and power and above all never being alone again among many people.



SOULMADE

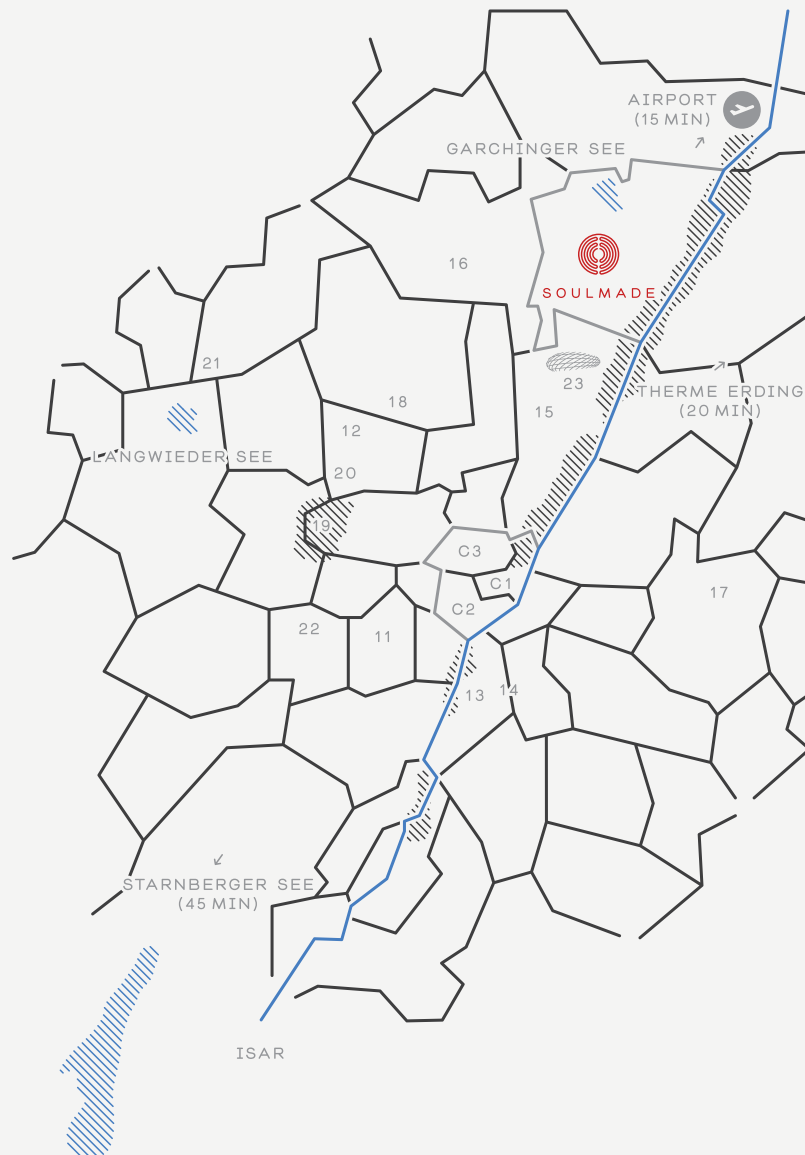
by Derag Livinghotels

Sternekatgorie

Fact is: in order to obtain official hotel stars, we would have to comply with a standardized list of requirements. Offering, for example, the traditional reception counter or a certain number of fitness devices. We are of the opinion, however, that new approaches ensuring the wellbeing of the guest in another way are more important than thinking in terms of categories. For this reason, SOULMADE will not be subject to star rating. Not yet.

Lage

Garching is not the Viktualienmarkt, of course (we've got a house there, too, after all). But it is an economically growing location between airport and centre – where you hear birdsong instead of trams. Apart from facilities of the Max Planck Institute as well as of LMU and Munich TU, you can find here among other things a research centre of General Electric as well as the Leibniz computer centre and the Allianz Arena is in the direct vicinity, too. And those who feel like enjoying the hustle and bustle of the city centre can be in the middle of Munich within half an hour by means of public transport.



- C1 ALTSTADT-LEHEL
- C2 LUDWIGS-ISARVORSTADT
- C3 MAXVORSTADT
- 01 FRAUENKIRCHE
- 02 MARIENPLATZ
- 03 MUSEUMSVIERTEL
- 04 BAYERISCHE STAATSOPER
- 05 MÜNCHNER RESIDENZ
- 06 ODEONSPLATZ
- 07 EISBACH
- 08 ALTER PETER
- 09 CHINESISCHER TURM
- 10 DEUTSCHES MUSEUM
- 11 THERESIENWIESE
- 12 OLYMPIAPARK
- 13 ZOO HELLABRUNN
- 14 FC BAYERN
- 15 M.O.C.
- 16 SCHLOSS SCHLEISSHEIM
- 17 MESSE RIEM
- 18 BMW MUSEUM
- 19 SCHLOSS NYMPHENBURG
- 20 BOTANISCHER GARTEN
- 21 GOLFCLUB ESCHENRIED
- 22 WESTPARK
- 23 ALLIANZ ARENA

Hard facts



SOULMADE

by Derag Livinghotels

Architects

Werner Willfurth
(München, D),
Johannes Kaufmann
(Dornbirn, AT)

Address

Soulmade Hotel Garching GmbH & Co. KG
Mühlfeldweg 46
DE-85748 Garching
+49 (0)89 / 24 41 55 - 0
soulmade@derag.de

Design

Inside design lobby/
conference areas:
Ela Brühl (D)

Contact for further information

Köhnlechner
Marketing & Media
Alexandra Köhnlechner
+49 (0)89 / 41 11 99 8 - 0
contact@akoehnlechner.de
www.akoehnlechner.de

Project developer

Derag-Gruppe
(Arcon Projekt)

Tim Düsen
CMO
Derag Livinghotels
+49 (0)89 / 23 70 12 50
tim.dueysen@deraghotels.de

Operator

Derag Livinghotels

www.soulmadehotels.com
www.deraghotels.de
www.facebook.com/deraghotels

Year of construction

2015

Prices

Business Suite:
65,- to 399,- Euro

Opening

April 2016

Junior Suite:
99,- to 519,- Euro

